

General safety warning signs and instructions



General warnings, please observe the following instructions!

WARNING



Warning, crushing hazard!



Warning, sharp object!



Warning of hot surfaces!



Warning of flammable substances / fire hazard warning



Read the operating instructions for your device and the enclosed safety instructions carefully!



Always disconnect your device from the power source before carrying out repair work!



Always wear suitable protective gloves!

Safety instructions

Dishwasher

IMPORTANT

These are only exemplary illustrations, please always refer to the operating instructions for your device!

All safety instructions describe in detail the potential risks they address and contain precise instructions on how to avoid injury, damage to property or electric shock as a result of improper handling. Please observe the following guidelines:



WARNING



1. Disconnect the appliance from the power supply before carrying out the procedures described.
2. Use protective gloves before starting work.
3. Only carry out the described procedures when the appliance is cold.

- Always disconnect the appliance from the power source before carrying out installation work.
- Installation and repairs should be carried out by qualified specialists in accordance with the manufacturer's instructions and the applicable local safety regulations. Therefore, only carry out repairs or replace parts yourself if this is expressly provided for in the user manual.
- Only use certified spare parts, in case of doubt original spare parts.
- Read all instructions carefully to avoid improper use and the associated risk of injury.
- Do not touch accessories and spare parts with wet hands.
- Be careful with hot surfaces: Do not touch hot surfaces of the appliance.
- Risk of burns: Avoid contact during and immediately after use. Allow the appliance to cool down completely before starting repair work.
- Suitable work gloves should always be worn when installing or maintaining accessories.
- Children and persons with reduced physical, sensory or mental capabilities or lack of experience and knowledge should only use the appliance under supervision or after thorough instruction by a responsible person.
- Keep packaging material out of the reach of children: Children could wrap themselves in packaging materials such as plastic bags or foil or pull them over their heads, which could lead to suffocation. Therefore, make sure that packaging materials are kept out of the reach of children.

Pump removal

1. Start by removing the dishwasher basket from the dishwasher.
2. Then remove the sieve located at the bottom of the appliance. The spray arm can be removed upwards (figure 1+2).
3. Next, loosen the two screws (figure 3) located at the bottom of the dishwasher.
4. Then turn your attention to the click fasteners located on the rear panel and the top and open them (figure 4+5).
5. Finally, you can remove the entire water guide (figure 6).

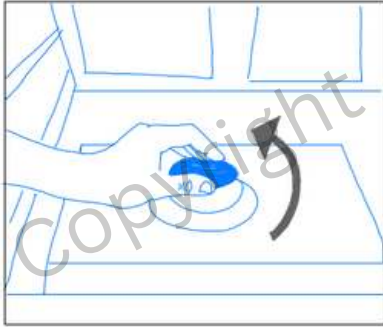


figure 1

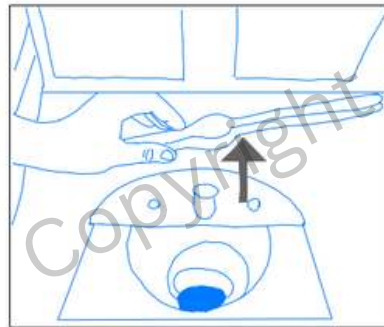


figure 2

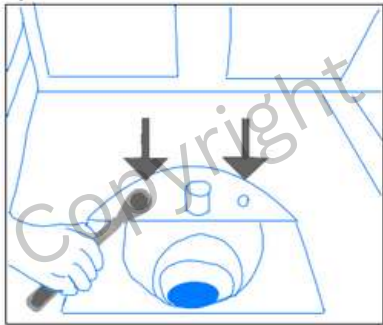


figure 3

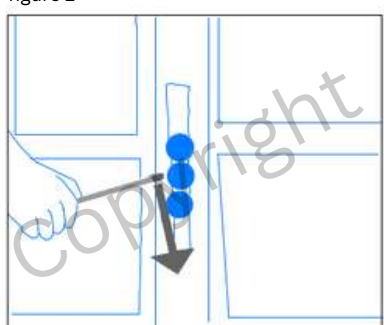


figure 4

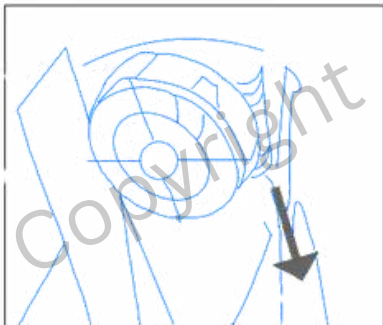


figure 5

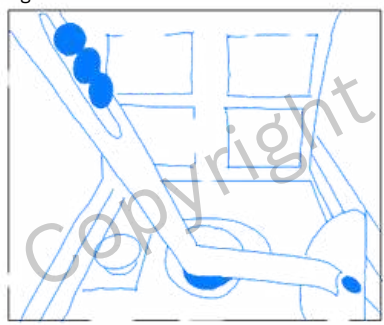


figure 6

1. First remove the two screws on the pump sump.
2. Then carefully cut off the plastic ridge on the water guide holder.
3. Now press the pump sump down about 1 cm.
4. In the next step, carefully thread the seal through the opening at the rear right using a wire. Take care not to damage the seal.

